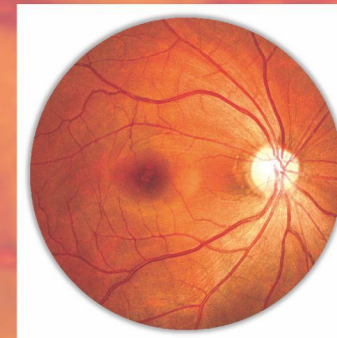


## Technical Parameter

|  |   |
|--|---|
| Maximum Angle of View                      | ≥45 °   |
| Resolution<br>(angle of visual field >30°) | Resolution at the center of the visual field ≥60lp/mm<br>Resolution at the middle of the visual field (r/2) ≥ 40lp/mm<br>Resolution at the edge of the visual field (r) ≥ 25lp/mm |
| Shooting Method                            | Manual/ Auto  |
| Pupil Diameter                             | ≥3.3mm  |
| Refractive compensation                    | ±23D  |
| Imaging Assist Function                    | Alignment Indication<br>Split line focus indicator  |
| Collector                                  | Color CMOS 1 Inch, Pixel ≥ 15 Million   |
| Light Source                               | LED infrared light<br>LED flash, 5 Gear   |
| Shooting Speed                             | 1.5s ≤ Pis  |
| Display Window                             | 10.1-Inch Touch Screen, Resolution 1280*800   |
| Fixation Lamp                              | External Fixation Lamp + Internal Fixation Lamp   |
| Operating System                           | Embedded Linux System   |



## Full-Automatic Fundus Camera SK-680A

ChongQing Sunkingdom Medical Instrument Co., Ltd.



Tel: +86 23 68643990  
FAX: +86 23 68102793  
URL: [en.cqsunkingdom.com](http://en.cqsunkingdom.com)  
E-mail: [sales@cqsunkingdom.com](mailto:sales@cqsunkingdom.com)



# Fundus Camera

## SK-680A Full-Automatic Fundus Camera

Support DICOM, HIS/PAS connection,



**Automatic seamless puzzle**



**Auto  
Position  
Alignment**

Based on the optical split line focusing, accurate auto focus, auto alignment position and automatic shooting are realized.

The image quality is guaranteed, and the clearest color fundus photos can be easily obtained.



**Lens Switch for Anterior&Posterior Segment**

The lens switching method is the international main way.



The fundus can be easily and quickly observed by alignment point in the anterior segment, You can get the photos of the previous section and enrich the content of the report.



**Split line focus**

The focusing principle keeps up with the international mainstream.

